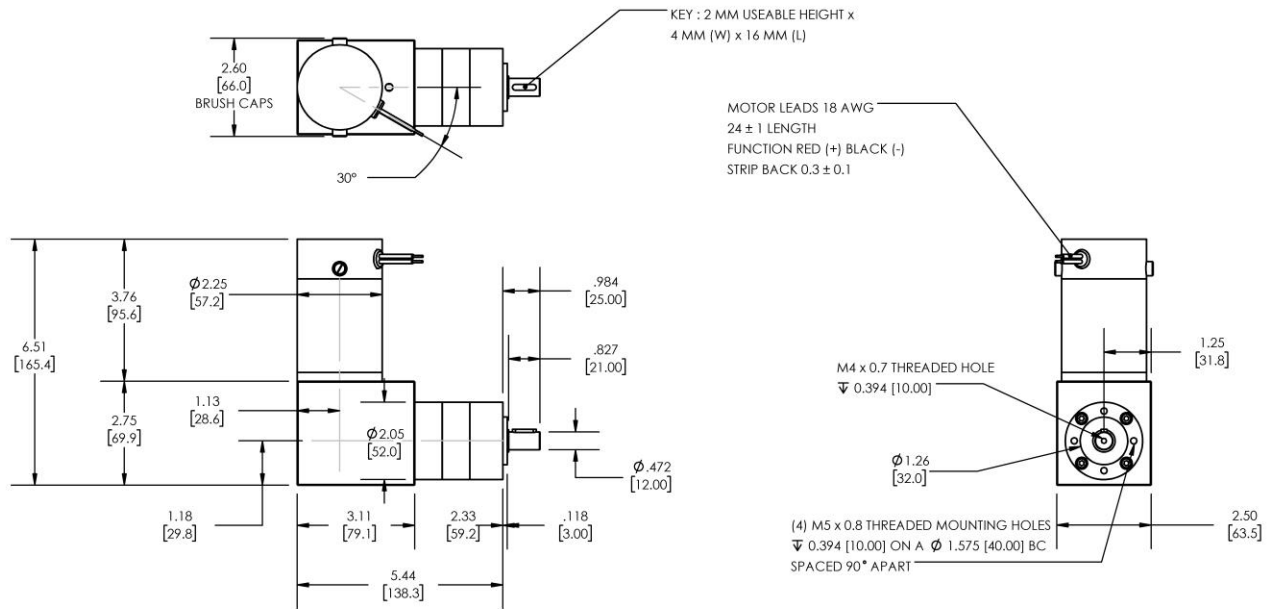


**Model Number:**

**MMP D22-376C-24V GRA52-035**



DIMENSIONS ARE INCHES [MM] UNLESS OTHERWISE STATED

PLANETARY GEARMOTOR OUTPUT PARAMETERS:	VALUE	UNITS	TOLERANCE
Gearhead Ratio (exact)	34.97 : 1		
Gearhead Shaft Output Speed (at full-load)	143	RPM	MAX
Gearmotor Rated Continuous Torque	54	In-Lbs	MAX
Gearmotor Rated Peak Torque	<b>178++</b>	In-Lbs	----
Gearhead Standard Backlash	45	Arc Minutes	MAX
Gearhead Efficiency	75%	----	----
Output Shaft Radial Load Capacity	72	Lbs	MAX
Output Shaft Axial Load Capacity	23	Lbs	MAX
Gearmotor Total Weight	5.7	Lbs	MAX

**++ All Peak Torque values are dependent upon duty. Contact our sales office for details.**

DC MOTOR PERFORMANCE PARAMETERS:	VALUE	UNITS	TOLERANCE
Rated DC Voltage	24	DC VOLTS	----
Rated Continuous Current	7.5	AMPERES	----
No-Load Speed	6486	RPM	MAX
Rated Speed	4993	RPM	+/- 15%
Rated Continuous Power Out	123	WATTS	+/- 15%
Rated Continuous Torque	33	OZ-IN	----
Peak Torque (motor only)	108	OZ-IN	----
No-Load Current	0.82	AMPERES	MAX
Back EMF Constant (Ke)	3.7	V/KRPM	+/- 10%
Torque Constant (Kt)	5.0	OZ-IN/AMP	+/- 10%
DC Armature Resistance	0.74	OHMS	+/- 15%
Armature Inductance	0.54	mH	+/- 15%
Armature temperature	155	DEG. C	MAX

**NOTES:**

- ENCODER & BRAKE OPTIONS AVAILABLE – [FOLLOW THIS LINK FOR DETAILS](#)
- NEMA MOUNTING FLANGE OPTION AVAILABLE – [FOLLOW THIS LINK FOR DETAILS](#)

## MIDWEST MOTION PRODUCTS, INC

DESIGN, MANUFACTURING & DISTRIBUTION - MOTION CONTROL EQUIPMENT

[www.midwestmotion.com](http://www.midwestmotion.com)

email: [sales@midwestmotion.com](mailto:sales@midwestmotion.com)